

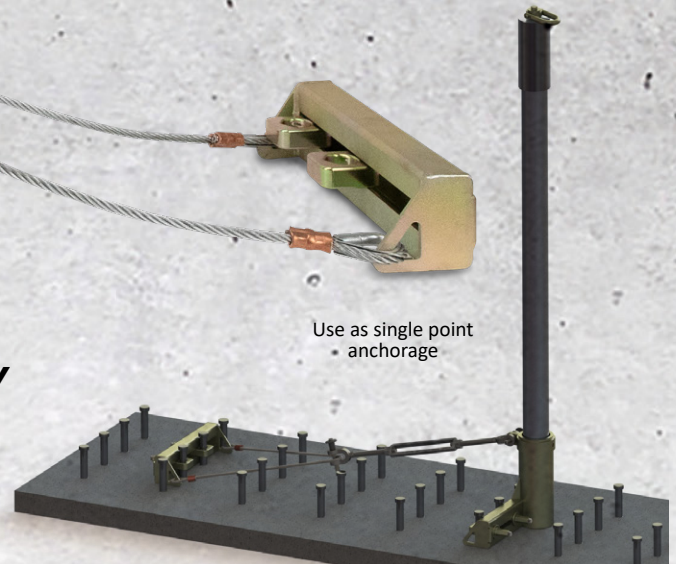


023-8087

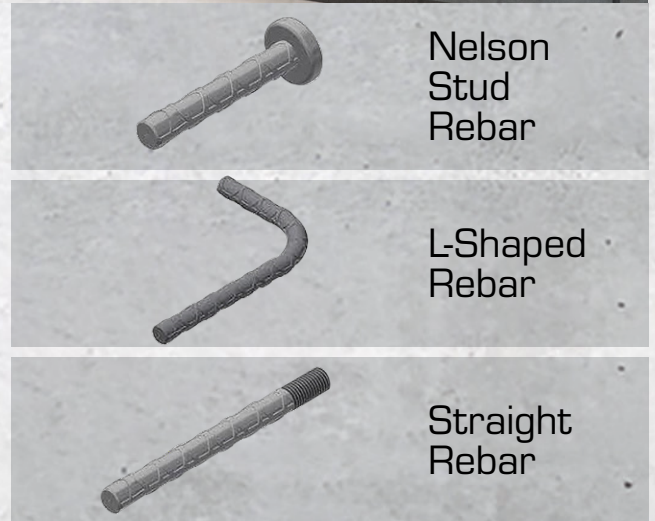
## INCREASED SAFETY AND VERSATILITY

# SAFELINK NELSON/ REBAR ASSEMBLY

- **Versatile:** Mounts to Nelson Stud, L-shaped and straight rebar
- **Smaller Footprint:** Provides more work space for greater efficiency
- **Low Profile:** Compact design more safely reduces trip hazards
- **Adjustable:** Clamps accommodate a wide range of rebar diameter and spacing
- **Fast Installation:** Just tighten four wingnuts for effortless installation





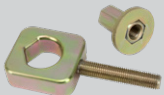
Use as single point anchorage



Nelson Stud Rebar

L-Shaped Rebar

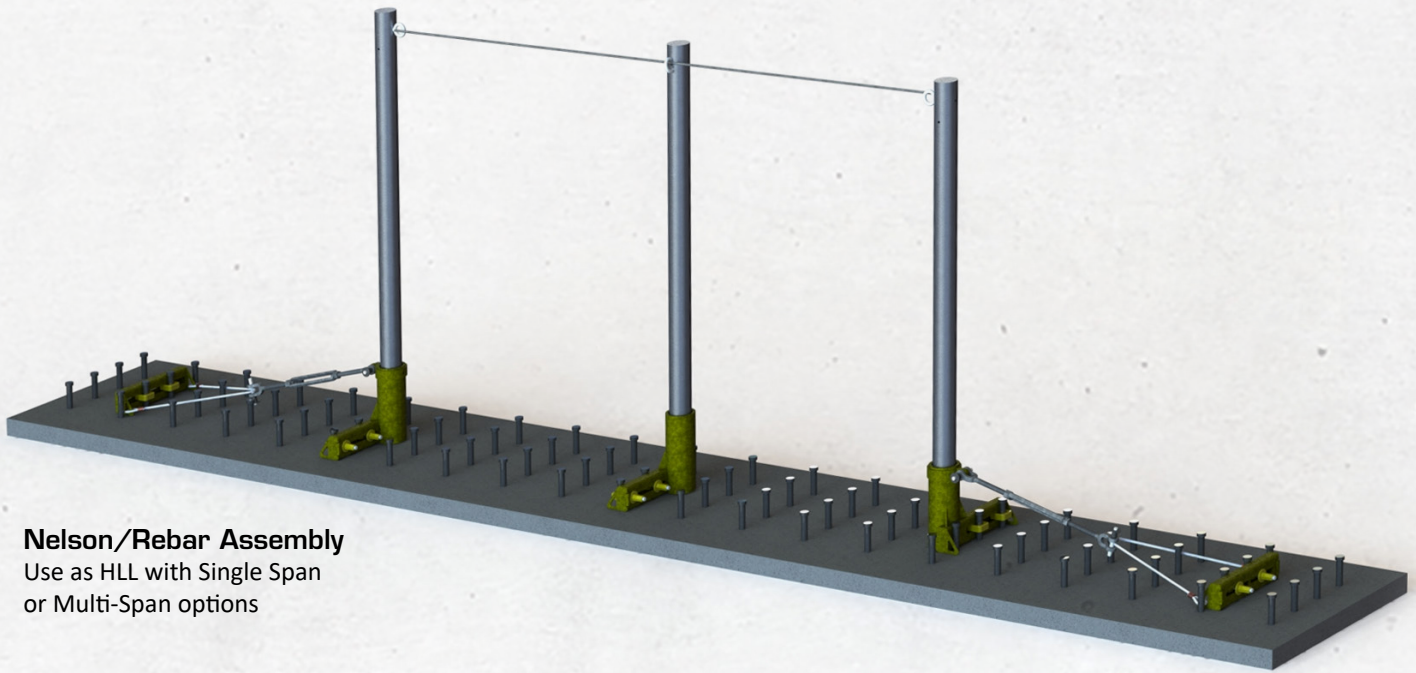
Straight Rebar

	023-8093	SafeLink Nelson/Rebar Collared Base
	023-8094	SafeLink Nelson/Rebar Support Base
	023-8092	SafeLink Nelson/Rebar Clamp Set

**For use with SafeLink Anchor Post FS-EX5501-5 and Eye Bolt FS-EX2508**

**KEY SPECS:**

Fits rebar diameters of 1/2"-1-3/8"  
 Fits rebar spacing from 2.5"-7.25" apart  
 System Capacity: Max 2 users/span  
 Assembly Base Span: 36"-48"  
 Minimum Breaking Strength: 5,000 lbs.  
 ANSI Weight Capacity: 130-310 lbs.  
 OSHA Standards: 1926.502, 1910.66



**Nelson/Rebar Assembly**  
Use as HLL with Single Span  
or Multi-Span options

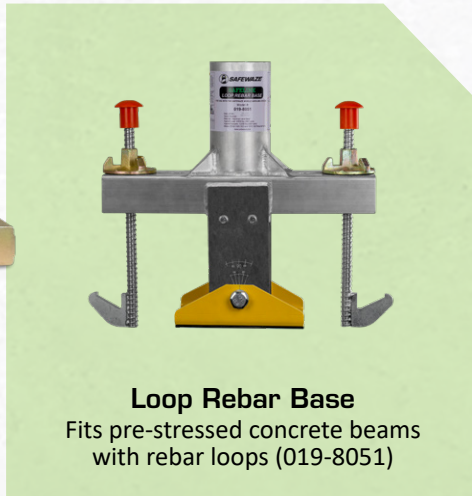
**ONE OF THE MOST COMPREHENSIVE BASE OFFERINGS!**

*Wherever you need an HLL, Safewaze has you covered.*

We have the trifecta for bridgework and infrastructure:



**Nelson/Rebar Assembly**  
Fits Nelson, L-shaped & straight  
rebar (023-8087)



**Loop Rebar Base**  
Fits pre-stressed concrete beams  
with rebar loops (019-8051)



**I-Beam Post Base**  
Two sizes to fit I-beams from  
6"-36" (022-8076 & 022-8077)

**Additional Base Options:**



**Form Link  
Anchor**  
Fits cage #7 rebar or larger  
(FS-EX2502)

**EZ-Link Double  
Connector**  
Fits cage #9 rebar or larger  
(FS-EX2502-DBL)

**Weld-on Post  
Baseplate**  
Mounts to steel  
(019-8035)

**Bolt-on Post  
Baseplate**  
Mounts to steel or  
concrete (019-8034)

**I-Beam  
Stanchion**  
Three size options  
(020-8060, 019-8038,  
019-8046)

