



ENGINEERED TO FIT A VARIETY OF WORK ZONES,
INCLUDING AN OVER-EDGE SCENARIO

10' TECHNICAL TRIPOD LINE

- **Massive stance** adjusts from 7' up to 18' in diameter
- **Innovative over-edge scenarios** for use on vertical walls
- **Lightweight system** transports, sets up and adjusts easily

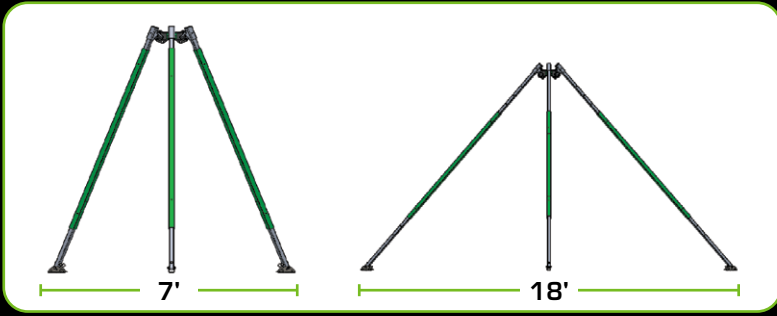
APPLICATIONS

- › Construction
- › Inspections
- › Maintenance
- › Rescue

WORK ZONES

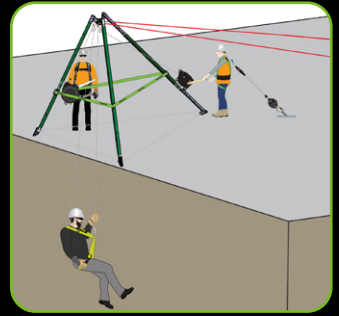
- › Confined Space
- › Trenches
- › Bridges
- › Dams
- › Mines
- › Cliffs
- › Vertical Walls

VERSATILE



Multiple stance configurations from 7' to a massive 18' diameter fit a variety of work zones and conditions

INNOVATIVE



Innovative over-edge scenario applications for vertical walls

Three device options mount inside or outside leg:

- i 3-Way System for fall protection
- ii Personnel Winch for moving people
- iii Material Winch for moving gear

Max versatility with (7) individual 5,000 lb. anchor points in head unit including a centered 360° captive eye



FLAT



UPRIGHT

Two footing configurations provide secure foundation – flat with rubber pads and upright with toothed grip for use on over-edge work

022-11035

CHAINS

SAFEWAZE

SAFEWAZE

022-11029



022-11033



022-11034



022-11035



022-11036



022-11037



10' Technical Tripod Line

022-11029	10' Tech Tripod Basic
022-11033	10' Tech Tripod Complete (2 steps, warning line)
022-11034	10' Tech Tripod Kit: 65' Personnel Winch, 65' 3-Way
022-11035	10' Tech Tripod Kit: 65' Material Winch, 65' 3-Way
022-11036	10' Tech Tripod Kit: 65' 3-Way
022-11037	10' Tech Tripod Kit: 65' Material Winch

- ▶ Lightweight yet durable aluminum construction
- ▶ Quick setup with detent pins for easy height and diameter adjustment

KEY SPECS:

Packed Size: Length 97.2" (247 cm) x Width 12" (30.5 cm)
 Working Height: Tallest 119" (302.3 cm), Shortest 53.5" (135.9 cm)
 Working Diameter: Narrowest 86.6" (219.9 cm), Widest 218" (553.7 cm)
 Weight: Basic tripod 64.3 lbs. (29.2 kg) + accessories as included
 Tripod Attachment Points: 1 captive eye, 6 anchor points on head
 Minimum Breaking Strength: 5,000 lbs. (2268 kg)
 ANSI Weight Capacity: 130-310 lbs. (59-141 kg)
 OSHA Weight Capacity: Up to 420 lbs. (190 kg)
 Maximum Material Capacity: 620 lbs. (281 kg)
 ANSI Standards: Z359.18-2017 Type T, Z359.4-2013, Z117.1-2022
 OSHA Standards: 1910.140, 1926.502

[All kits include heavy-duty storage bag for easy transport and organization plus Safety Chain & Quick Link]

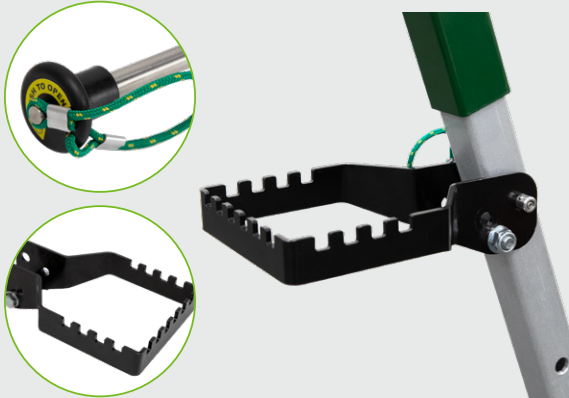
ACCESSORIES

Check out these new items launching with our new 10' Technical Tripod line!

022-11032	10' Tech Tripod Bag
022-11030	Tripod Step (10' Tripod)
022-11031	Perimeter Warning Line (10' Tripod)



Heavy-duty storage bag with wheels for easy transport, multiple handles, padded shoulder strap and labeled pockets for organization (included with all kits)



Tripod Step with firm footing safely increases reach to anchor points*



Perimeter Warning Line secures quickly and easily to prevent fall hazards*

COMPONENTS

These existing items complement the new 10' Technical Tripod line.

020-11025	Aluminum Tripod Pulley
019-11010	Universal Tripod Bracket
019-11017	Tripod Replacement Chain
019-11018	Tripod Quick Link
FS1015	Small Steel Carabiner
020-11020	30" Rescue & Retrieval Assembly



DID YOU KNOW?

You can fall from height even when below ground!

In addition to safe entry, exit and retrieval (rescue), proper fall protection PPE in a confined space will keep workers from hitting the next lower level, even if that level is underground.

*Accessories vary by kit. Kits are pictured with included equipment. Visit safewaze.com for further details.

