



FS-EX2502-DBL

SafeLink EZ-Link Double Connector

FEATURES :

- The FS-EX2505-DBL base is designed for use with the Safewaze SafeLink HLL system and is permitted for single point tie-off.
- Includes 3-piece aluminum bracket kit, 4 steel threaded rods, and 4 wingnut brackets.
- For use with the FS-EX5501-5 aluminum post.
- 360° allowable work radius.

MOUNTING OPTIONS:

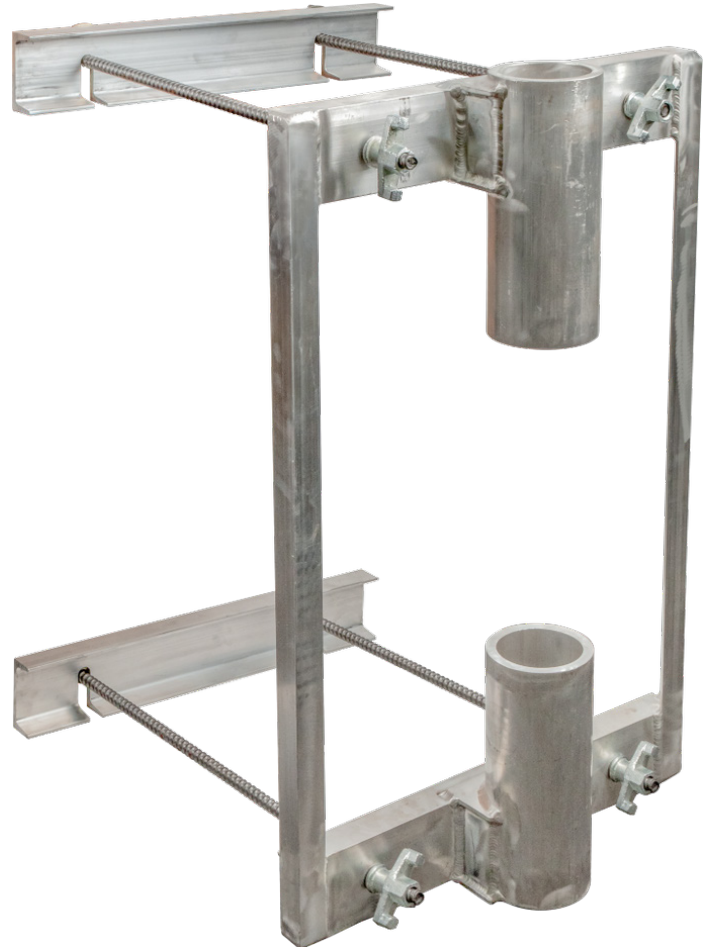
- (6) #9 or larger rebar

MINIMUM BREAKING STRENGTH:

- 5,000 lbs. (2268 kg)

ITEM WEIGHT :

- 58 lbs. (26.3 kg)



USER WEIGHT CAPACITY	
ANSI	130-310 lbs. (59-140.6 kg)
OSHA	N/A

STANDARD COMPLIANT WITH	
ANSI	N/A
OSHA	1926.502

SIZE(S)	
N/A	

COMPONENT	MATERIAL SPECIFICATION
Bracket	6061-T6511 aluminum
Wingnuts	Zinc plated steel
Thread bar	Zinc plated steel