



**019-8041 and 019-8047**

**SafeLink I-Beam Base**

**FEATURES :**

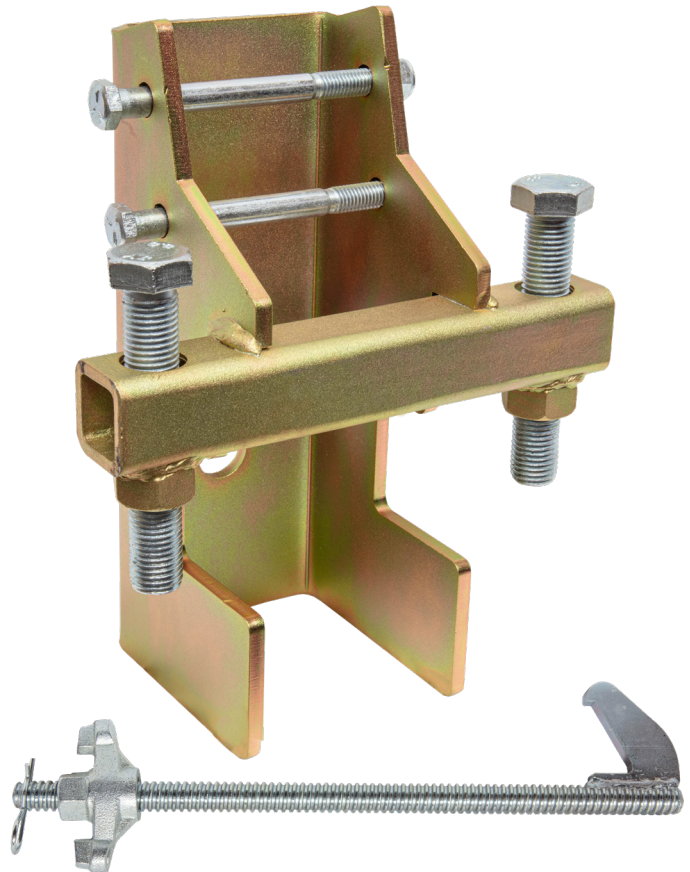
- Replacement post for the 42" I-Beam Stanchion used with all horizontal lifeline system
- Integrated carry handle
- Includes SafeLink I-Beam Clamp

**FALL ARREST POINT(S) :**

- N/A

**ITEM WEIGHT :**

- 13.8lbs (6.3kg)



USER WEIGHT CAPACITY	
ANSI	130-310lbs (140.6kg)
OSHA	N/A

STANDARD COMPLIANT WITH	
ANSI	N/A
OSHA	1926.502, 1910.140

SIZE(S)	
019-8041	Base with 4" to 24" Clamp
019-8047	Base with 4" to 18" Clamp

COMPONENT	MATERIAL SPECIFICATION
I-Beam Base	YCM Plated Steel
Clamp	Clear Zinc Plated Steel